



WORTH AVENUE
YACHTS

Industry Leader in Yacht Sales, Charter & New Construction



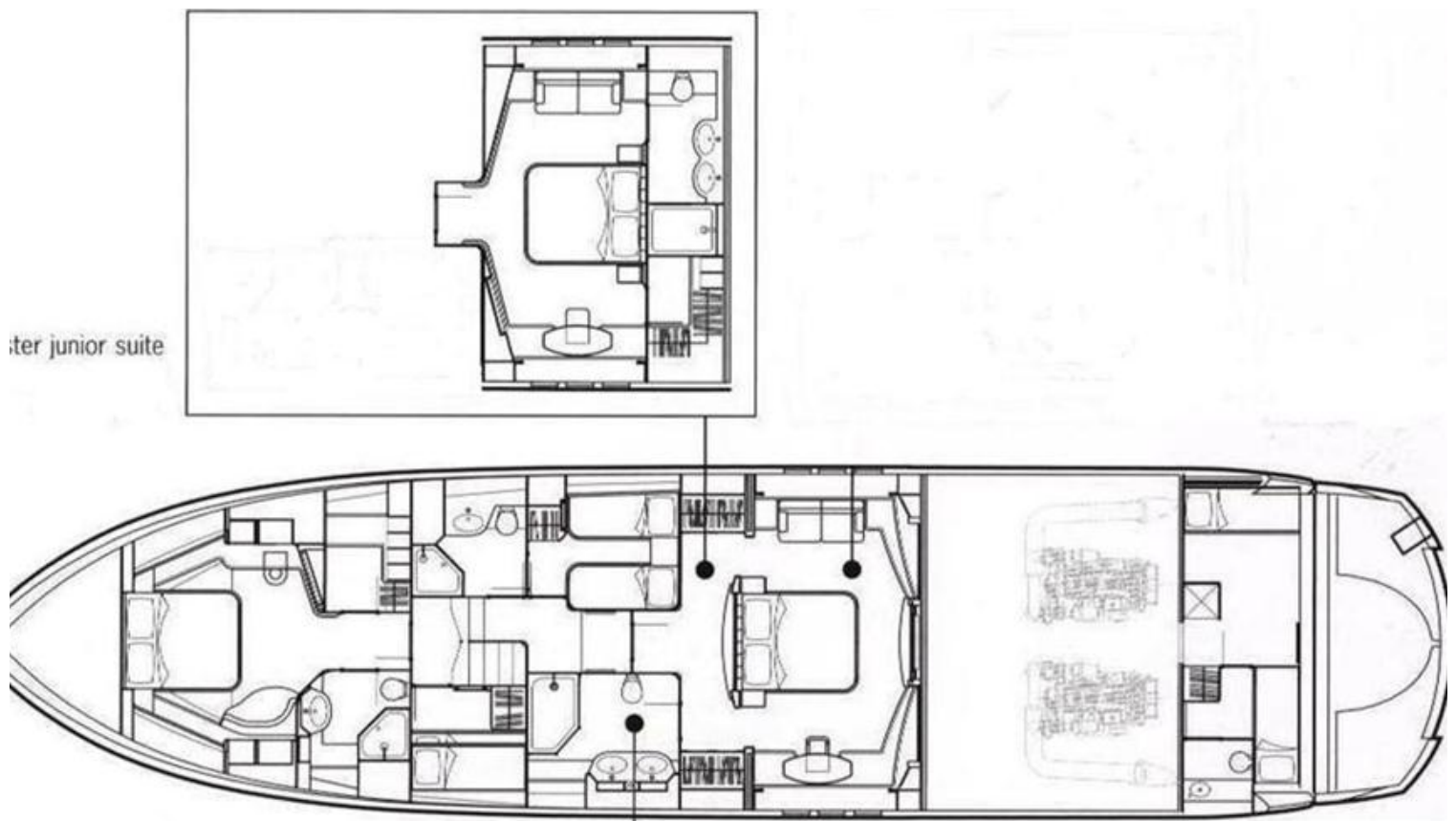
82' SUNSEEKER 82 YACHT

82' 0" / 24.99m SUNSEEKER 2007

8 Guests / 4 Staterooms

SPECIFICATIONS

Length:	82' 0" (24.99m)
Beam:	20' 3" (6.17m)
Draft:	
Model Year:	2007
Year:	2007
Builder:	SUNSEEKER
Model:	82 Yacht
Hull Material:	Fiberglass
Flag:	England
Classification:	Unknown
Engines:	2x Caterpillar Caterpillar
Max speed:	30 Knots
Staterooms:	4
Guests:	8
Total Crew:	3
Location:	Bodrum, Turkey
Price:	£1,300,000 GBP









REMARKS

This Sunseeker 82 Yacht is a white hull model. Very keen seller. Try offers !

SPECIFICATIONS

Accommodation

4 cabins layout. Master suite and VIP cabin with en-suite bathroom and the 2 twin cabins with en-suite bathrooms. 2 crew cabins aft with one single and one double bed and one bathroom.

Galley & Domestic

- American style fridge freezer
- Ceramic hob
- Microwave/oven
- Dishwasher
- Flybridge wetbar with sink, icemaker, coolchest & Gaganeau lava coal electric BBQ grill
- Aft cockpit wetbar with cool chest & rubbish bin
- U-line WC15 wine cooler located in bar island in galley

Electrical

- 2 x Kohler generators 23kw
- Glendinning Cablemaster - 2 x power feed & recovery of shorepower 50amp 220v AC cable
- Isolation transformer
- Seamless transfer
- AC shorepower/battery charger

Main Equipment

- Remote controlled spotlight at bow
- Air conditioning
- HRO Seafari SFM 1160-2 (183 lph) water maker with fresh water flushing
- Bow & stern thrusters
- Hydraulic lifting platform
- Electric anchor winch with foredeck & flybridge controls
- Stern winches
- Teak cockpit, flybridge, side decks, bathing platform & step
- Canvas covers for all flybridge seating, bow cushions/seats & flybridge table
- Deck wash with outlets forward, aft & to flybridge
- 2 brick safes with digital locks fitted in master & VIP staterooms
- General Ecology Seagull IV X-6 double system water purifier for cold water supply
- Hot & cold swimming shower at stern
- Trim tabs Williams
- 385 jet tender with low hours
- Seadoo Jet Ski with low hours
- Hard Top over fly bridge

Communication Equipment

- Satellite Fleet 33 in G8 dome with handset, fax & data point
- VHF with DSC triple station
- Captains cupboard housing PC, printer, fax & mobile VHF's

Navigation Equipment

- Radar/chartplotter with GPS
Simrad RS87
- Electronic speed & depth
displays Autopilot
- Power assisted steering

Entertainment Systems

- Satellite Navision G8 TV system with 5 decoders
- 42" Sony LCD TV in master stateroom
- 32" Sony LCD TV in VIP stateroom
- Sony DAV-D150 DVD/CD/VCR 5:1 Cinema surround sound system
in VIP stateroom
- Hi-fi DVD/CD/radio surround sound system to saloon & master
stateroom
- DVD/CD players in guest cabins
- Sony central PC distribution system